

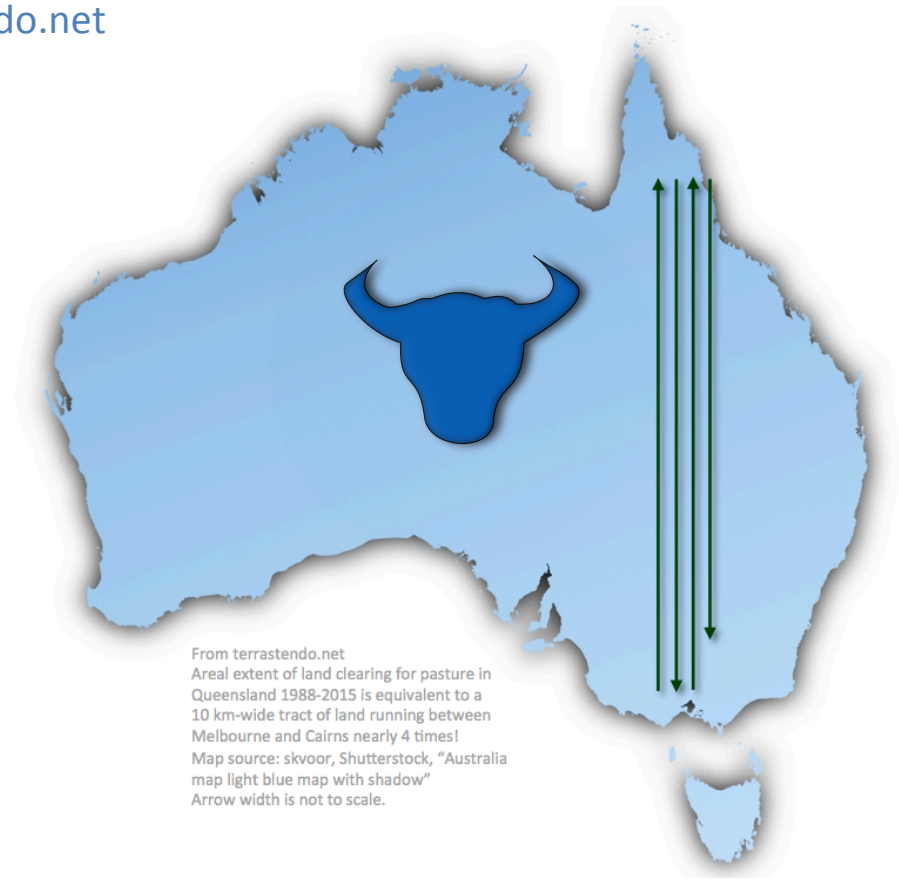
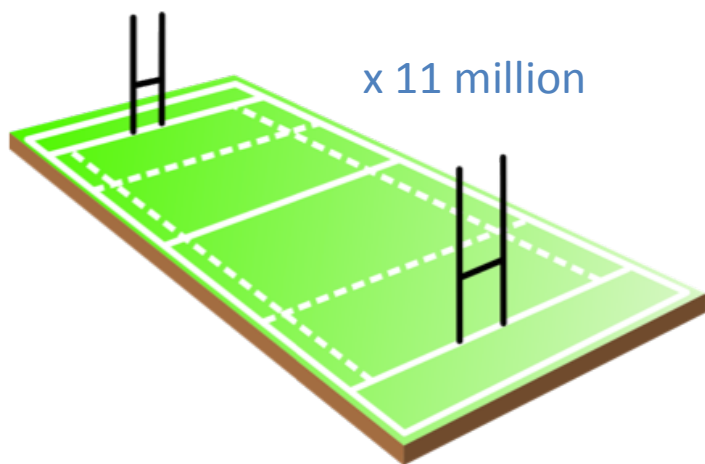
SOME OF THE TRUE COSTS OF ANIMAL-BASED FOOD CONSUMPTION AND PRODUCTION IN AUSTRALIA



terrastendo.net

The area cleared for pasture in Queensland from 1988 to 2015 was equivalent to a 10 kilometre-wide tract of land running between Melbourne and Cairns nearly 4 times! And it's still going.

It also equaled nearly 11 million rugby fields!



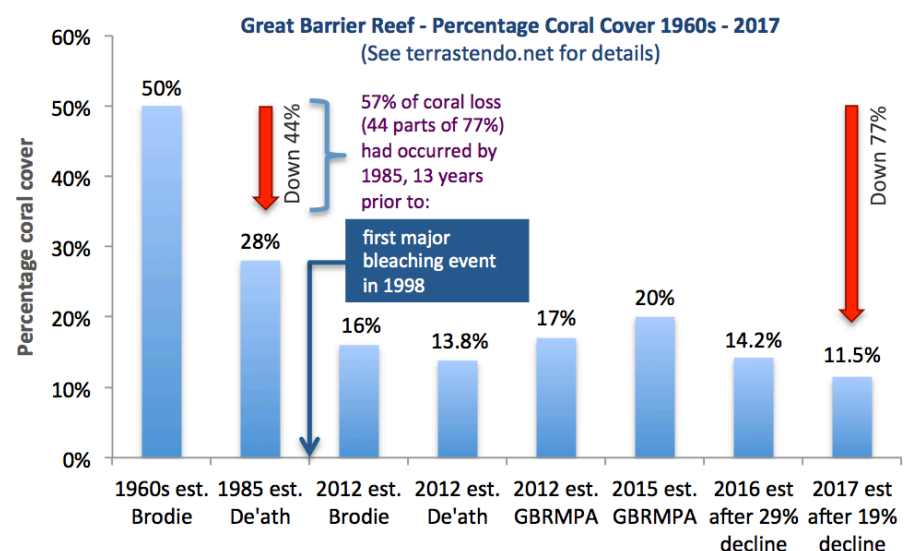
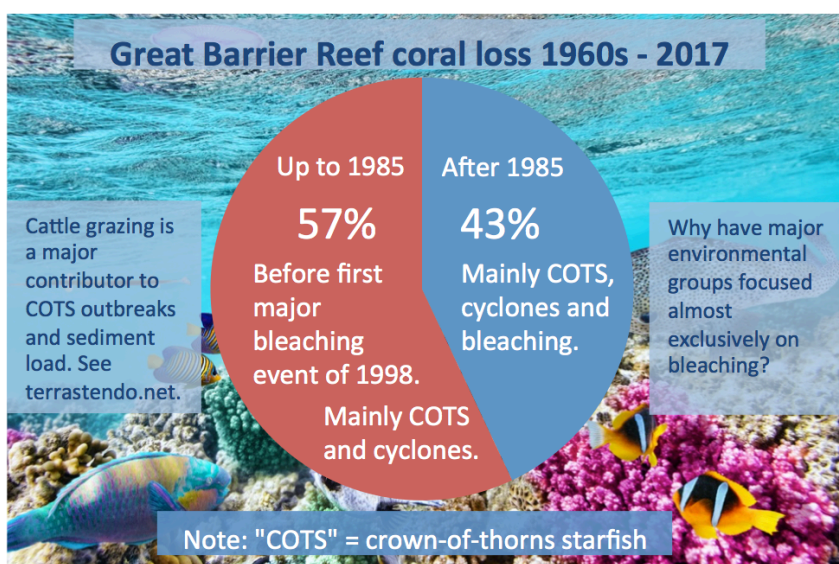
From terrastendo.net
Areal extent of land clearing for pasture in Queensland 1988-2015 is equivalent to a 10 km-wide tract of land running between Melbourne and Cairns nearly 4 times!
Map source: skvoor, Shutterstock, "Australia map light blue map with shadow"
Arrow width is not to scale.

WWF has included eastern Australia in a list of 11 global deforestation fronts for the 20 years to 2030 due to livestock-related land clearing in Queensland and New South Wales. In March 2017, it referred to land clearing in Queensland as a "growing tsunami".

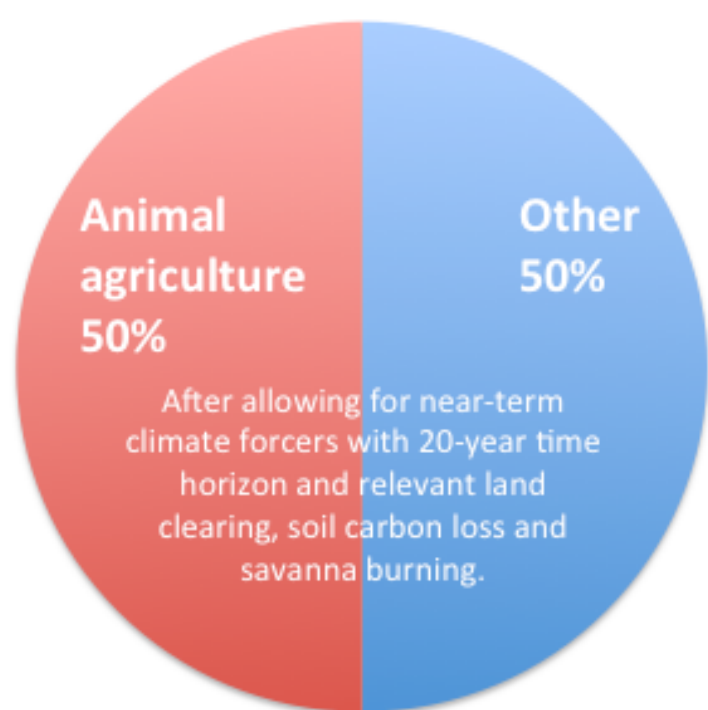
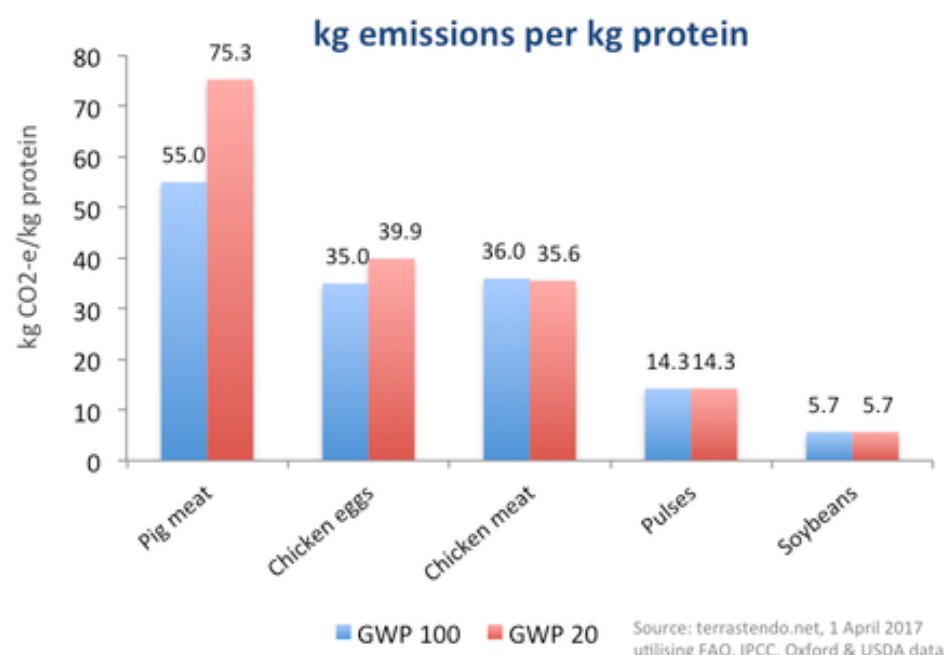
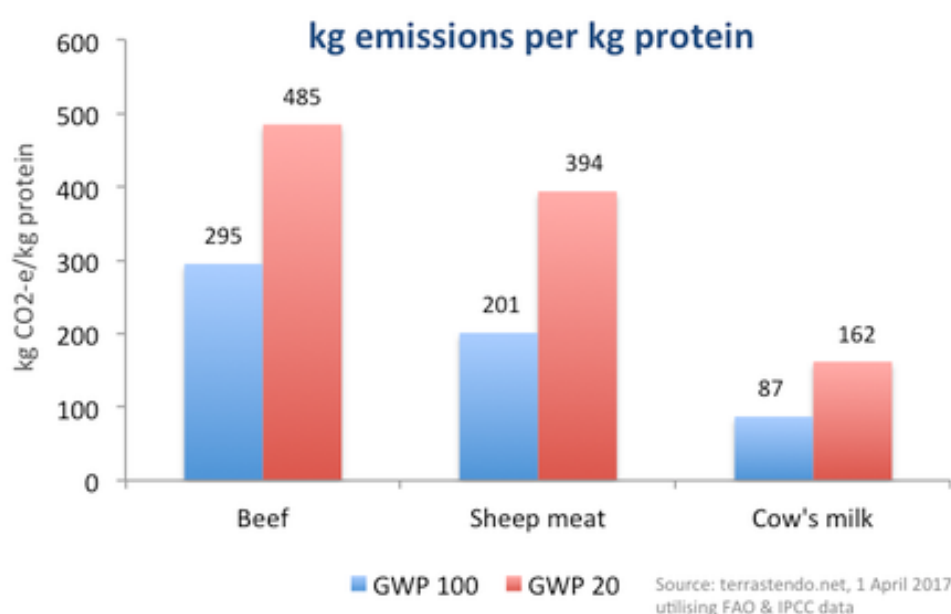
Cattle grazing has been a major contributor to sediment, nitrogen and phosphorous loads in the Great Barrier Reef's waters, reducing coral's resilience and increasing outbreaks of crown-of-thorns starfish.



Major bleaching events in quick succession have been disastrous for the reef, but so have decades of cattle grazing on cleared and uncleared land.



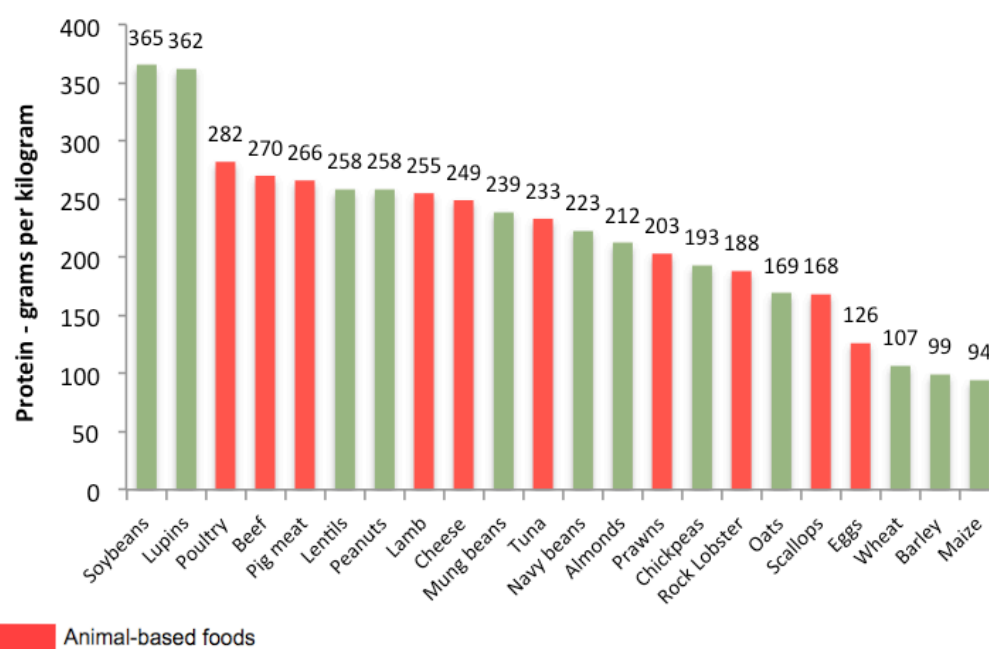
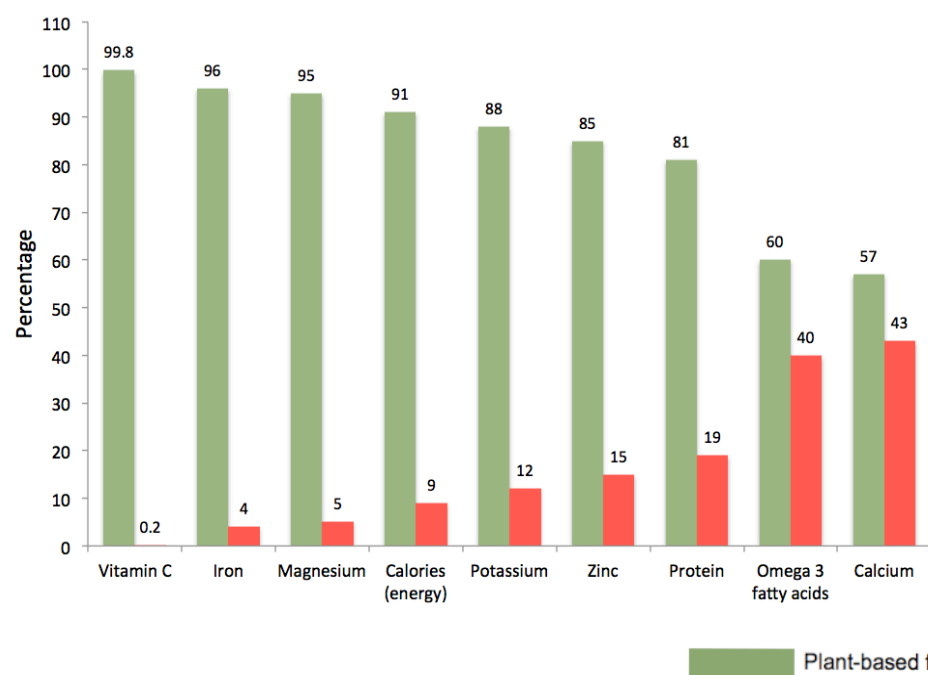
The greenhouse gas emissions intensity of animal food products far exceeds that of plant-based options. Here are some global average figures based on 100-year and 20-year time horizons. Australia's figures for beef and sheep meat are below the global average but still multiples of plant-based figures.



Focusing on factors that are effectively ignored or understated in official figures, researchers from the Melbourne Sustainable Society Institute at the University of Melbourne and Australian climate change campaign group Beyond Zero Emissions have estimated that animal agriculture is responsible for around 50% of Australia's greenhouse gas emissions.

Most of our nutrients in Australia are produced in plant-based foods. That includes 81% of protein and 57% of calcium.

Per kilogram of product, soybeans contain 35% more protein than beef, including all the essential amino acids.



© Paul Mahony and Terrastendo 2017 and relevant sources referred to below. First published 6 August 2017.

The nutritional charts are based on: (a) production figures from the Department of Agriculture, Fisheries and Forestry's "Australian food statistics 2011-12"; and/or (b) nutritional information for each product from the United States Department of Agriculture's (USDA) National Nutrient Database for Standard Reference.

Animal agriculture's share of Australia's emissions from Wedderburn-Bisshop, G., Longmire, A., Rickards, L., "Neglected Transformational Responses: Implications of Excluding Short Lived Emissions and Near Term Projections in Greenhouse Gas Accounting", *International Journal of Climate Change: Impacts and Responses*, Volume 7, Issue 3, September 2015, pp.11-27. Article: Print (Spiral Bound). Published Online: August 17, 2015

Full references for other information are available from the Terrastendo website in the articles "Beef, the reef and rugby: We have a problem" and "Meat Eaters vs the Great Barrier Reef" and in the submission available via the article "Response to climate emergency plan". None of the information is intended to represent nutritional, dietary, medical, health or similar advice and should not be relied on as such.

Images:

Football Field Photo | Lucadp | Dreamstime.com

Bull's head | OpenClipart-Vectors | Pixabay

Gully erosion at Springvale Station | Andrew Brooks | Griffith University

Morning mist | Anekoho | Dreamstime

Angus cross Brahman Cattle | Michelle Wignall | Shutterstock

Australia map light blue map with shadow | skvoor | Shutterstock

Crown-of-Thorns Starfish | Ryan McMinds | Lizard Island, Flickr, Attribution 2.0 Generic (CC BY 2.0)

Wonderful and beautiful underwater world with corals and tropical fish | Brian Kinney | Shutterstock